

APPLICATION: 1 Axle 2S1M HALDEX SELECT FFV SVC PRIORITY

PART #: **PAK2S1M-1-HR**

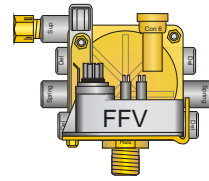
CONTENTS: Glad hand assemblies

- Air tank with installed drain valve and plugged unused ports
- Air tank mounting kit with pads, bolts, washers and lock nuts
- Brake valve(s) are installed and include push to connect fittings
- Hoses with swivel hose ends are installed to valve(s)
- Two speed sensors, sensor bushings and sensor extensions
- Hose separators and sensor cable retainers

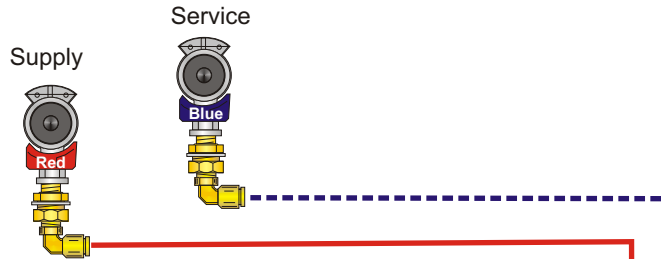
OPTIONAL SYSTEMS

**PAK2S1M-1-HS**

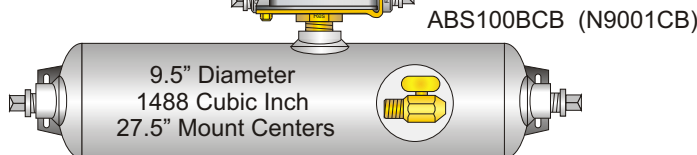
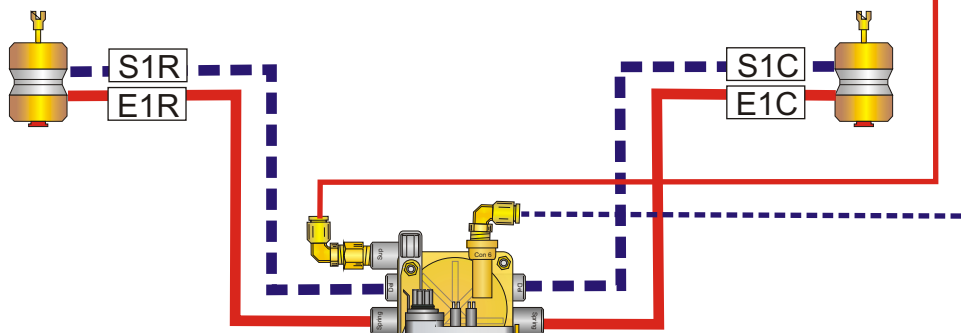
SPRING BRAKE PRIORITY VALVE



ABS100BBB (N9001BB)



SPECIFY YOUR HOSE LENGTHS BELOW



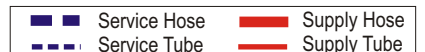
ABS100BCB (N9001CB)

SPECIFY HOSE LENGTH IN INCHES  
EMERGENCY:

E1R	E1C
E2R	E2C
E3R	E3C

SERVICE:

S1R	S1C
S2R	S2C
S3R	S3C
S4R	S4C



**Specifications:**

Hoses meet J1402 & JT106 specifications and are 3/8 ID unless otherwise noted. Reservoirs meet J10B specifications  
Pipe fittings are brass or plated SH80 steel. Push-in style 3/8 tube fittings standard. ABS Electronics pre-tested before shipment.